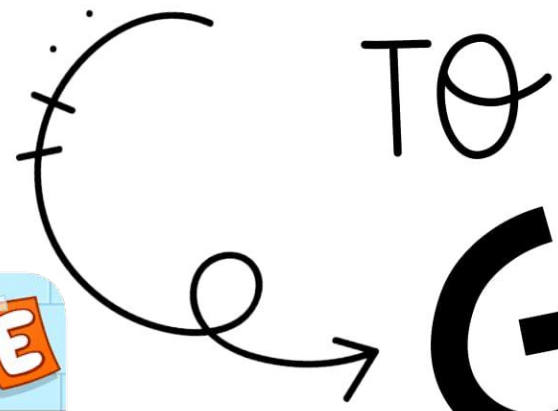


WELCOME



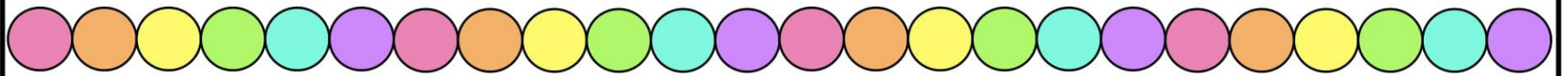
TO

GRADE

2!



Mrs. Butler
Cliffwood Elementary



Communication

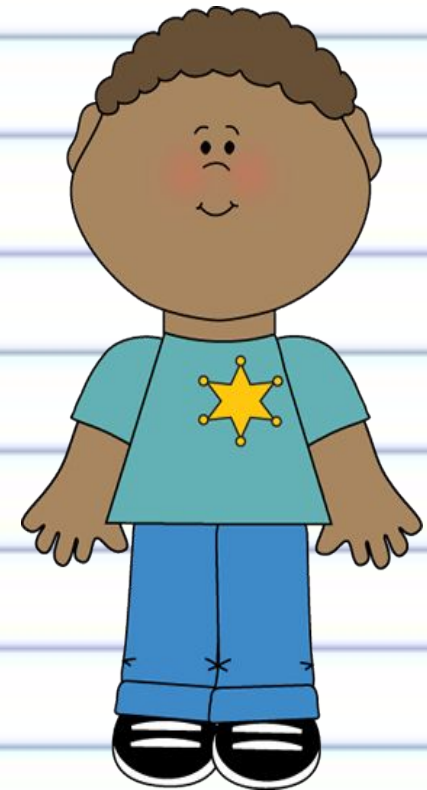
LET ME KNOW

- Email cbutler@marsd.org
- Website – www.marsd.org
go to Cliffwood/Staff/cbutler
- Google Classroom
- Phone (732) 705-5600 ext 5626
- Conferences (2 per year)- Nov & March
- Homework Folders (Gold Folders) DAILY
- [Parent Questionnaire](#)
- Grades & Report Cards (in Parent Portal)
- Absences-send note/email



Classroom Expectations

- GREEN- Did My Job Today
 - YELLOW- Warning #1
 - ORANGE-Warning #2
 - RED- Communicate with parent
-
- CLASS DOJO: earn points (Dojo Rewards in Google Classroom)
 - Star Student
 - Supplies



WORK HARD!

BE KIND!

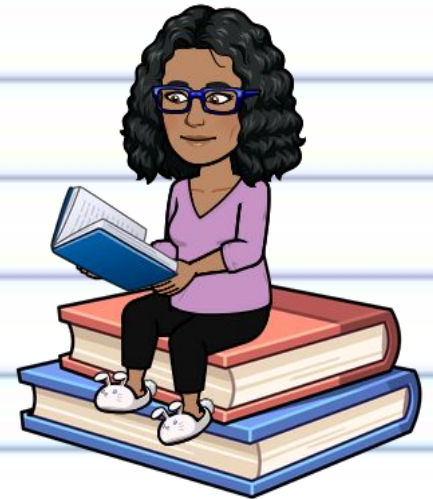
Our Schedule



		Monday	Tuesday	Wednesday	Thursday	Friday
Arrival	9:10 - 9:20 (10 mins)	A.M. duty, supervise students in classroom				
Homeroom	9:20 - 9:30 (10 mins)	Homeroom/Morning Meeting				
Period 1	9:30 - 10:10 (40 mins)	Math	Math	Math	Math	Math
Period 2	10:15 - 10:55 (40 mins)	Math	Math	Math	Literacy	Math
Period 3	11:00 - 11:40 (40 mins)	Literacy	Literacy	Literacy	Literacy	Literacy
Period 4	11:45 - 12:25 (40 mins)	Phys. Ed.	Literacy	Literacy	Spanish	Art
Period 5	12:30 - 1:10 (40 mins)	Literacy	Music	Health	Library/Media	Literacy *
Period 6	1:15 - 1:55 (40 mins)	Lunch/Recess				
Period 7	2:00 - 2:40 (40 mins)	Literacy	Literacy	Literacy	Literacy	Literacy & Book Exchange
Period 8	2:45 - 3:25 (40 mins)	Science	Science	Science	Social Studies	Social Studies
Homeroom	3:25 - 3:30 (5 mins)	Pack-up, leave classroom at 3:30 bell				
Dismissal	3:35 - 3:50 (15 mins)	P.M. duty, supervise students at dismissal				

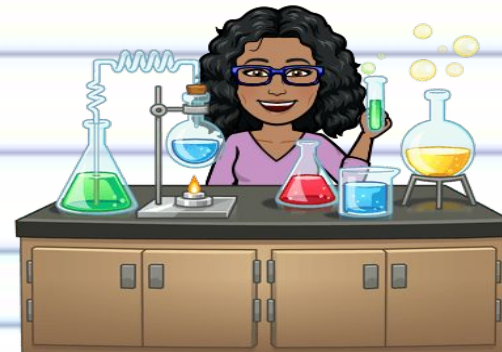
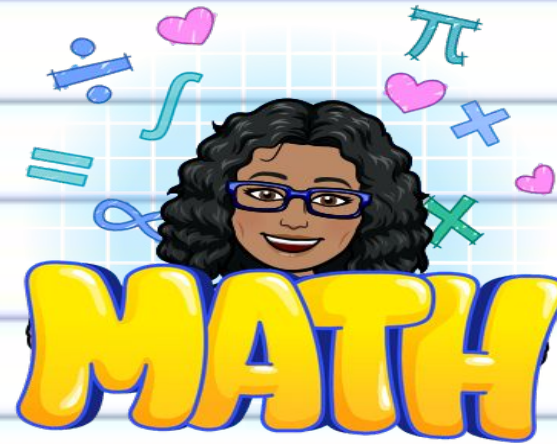
Reading and Writing

- Savvas MyView Program
 - Writing (Prewrite, Draft, Revise, Edit and Publish)
 - Vocabulary/ Phonics/ Spelling
 - Shared Reading (big books & small books)
 - Guided Reading/ Literacy Centers
 - Independent Reading
 - Interventionist is Ms. Bottone
 - ESL - Mrs. Alli
- Morning Meeting/Mindfulness
 - Class Greetings/Class discussions
 - Bucket Filler/Flashlight Fridays



EDM Math/ S.T.E.A.M

- **Everyday Math**
 - Journal (workbooks)
 - Connect-Ed
 - Math tools
- **STEAM**
 - Notebook Work
 - Design Challenges



Lunch/ Snacks

- **Breakfast 9:10-9:35**

“Grab and Go” = eat in classroom

No cost to families this year

- **Snacks 11:00**

Healthy, light, and clean

Please separate it from actual lunch

- **Lunch & Recess 1:15-1:55**

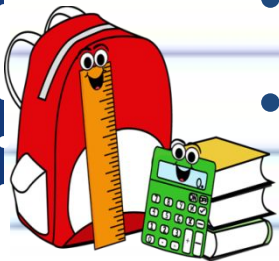
Ordering is done during HR

No cost to families this year



Homework

- Gold Folder DAILY
- Homework is marked with **X**
- Read for 15-20 minutes every night.
- Math Home Links
- iReady Learning Path - work 25 minutes on Math or Reading per night
- Projects/Reports/Current Events
- Parent Homework Pass



Important Information

- **Masks must be worn in school.** Please send extra masks in bookbags.
- **Bring Chromebooks in laptop bags DAILY**
Sign out & Shut Down Chromebooks

Charge Chromebooks DAILY

- **Scholastic Books:** an optional book order every month. No Cash!
- **Birthdays** - individually wrapped items



Other Important Information

- **iReady** Testing 3x year & 25 minutes per night to work on Learning Path
- **Check Parent Portal** - weekly updates
- Passwords for EDM ConnectEd
- Clever
- **Peer Buddies**-parents request application
- [Title 1 Annual Parent Meeting BTS Night Slide](#)
- [Strategic Planning Save the Date & RSVP Google Slide](#)



Any Questions?



Thanks so much for coming!!